

Surrey Social Care Services Board

**Introduction for members
Thursday 25 June 2015**

**Caroline Budden
Deputy Director
Children, Schools and Families**



SURREY

Keeping children safe

Our Surrey picture

- In 2014/15, we had completed a total of 9866 referrals to Children's Services.
- Overall total of children entering care during 2014/15 was 1131.

19 June 2015:

- 5,791 open cases across the service*
 - 4074 children in need cases (including 439 care leavers)
 - 936 children subject to a child protection plan
 - 822 looked after children.

* There are a number of open cases held by countywide services and the MASH not included in area figures to follow.



SURREY

Children's Services

There are eight parts to Children's Services.

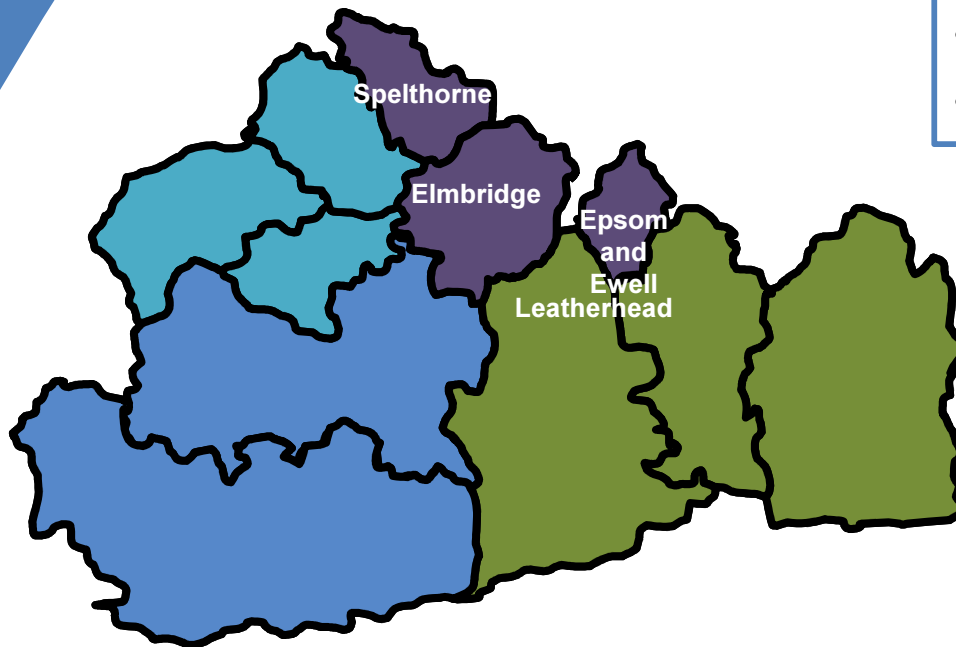
- **Four area teams:** north-east, north-west, south-east, south-west.
The area functions include:
 - a referral hub as part of the new Referral, Assessment and Intervention Service (RAIS)
 - child protection and proceedings
 - looked after children
- **Countywide Services**
- **Safeguarding unit**
- **Commissioning team**
- **Performance and support team.**



North-east area

Borders on five London boroughs

- has large suburban areas
- significant travel for staff
- implications for recruitment.



Area structure

- The social work academy.
- 67 social workers and 23 family support workers
- 4 advice support and information officers
- 5 team managers and 16 assistant team managers

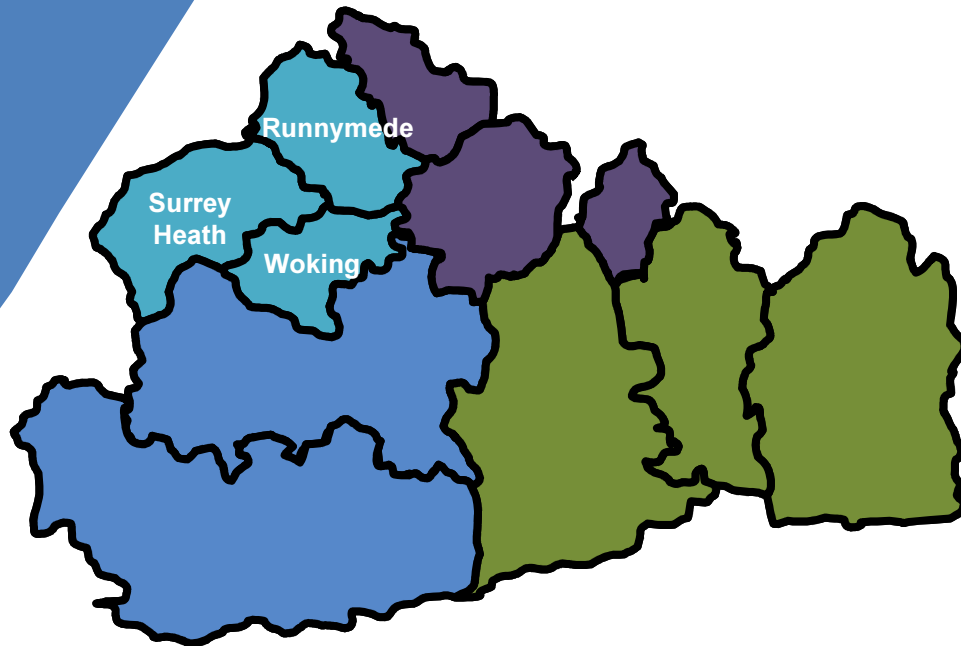
- **Total population:** 306,766
- **Children aged 18 and under:** 78,857

19 June:

- 1290 open cases
- 324 children on child protection plans
- 191 looked after children.



North-west area



- Runnymede, Woking and Surrey Heath boroughs.
- Consistently high number of contacts and referrals.
- Population of mixed ethnicities particularly in Woking, with 75% of residents describing themselves as White British.
- High number of unaccompanied asylum seekers placed in care, including 8 under the age of 16, and of looked after children placed outside of Surrey requiring longer travel for social workers.

Area structure

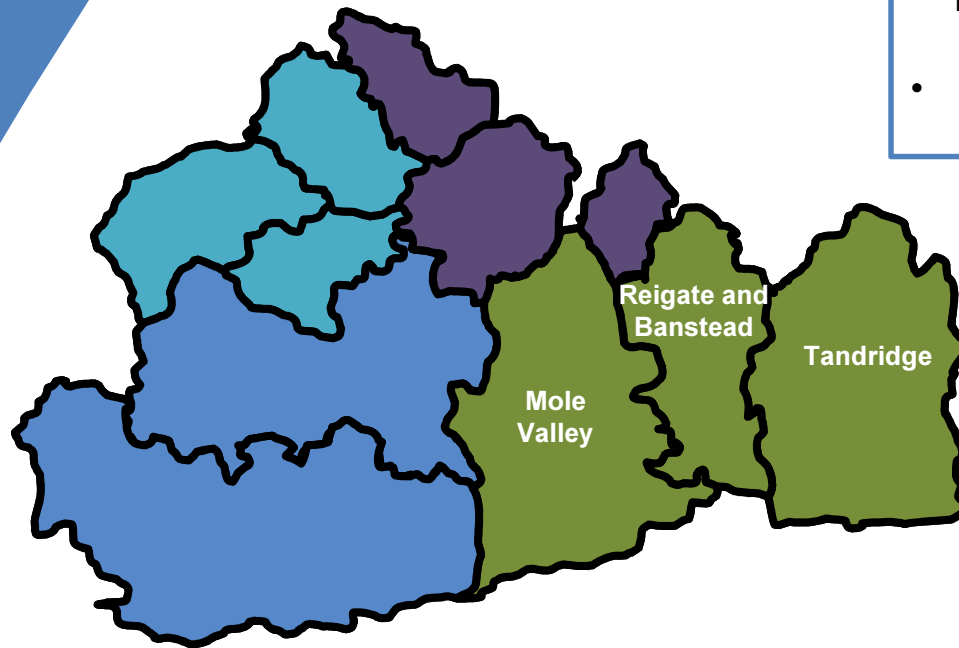
- 62 social workers
- 17 family support workers
- 4 advice support and information officers
- 4 team managers and 16 assistant team managers
- some vacancies and agency locums

19 June:

- 1318 open cases.
- 234 children on child protection plans.
- 223 looked after children.

- **Total population:**
269,919
- **Children aged 18 and under:**
61,317

South-east area



- Reigate and Banstead borough, Tandridge and Mole Valley districts.
- Based in Consort House in Redhill.

Area structure

- 59.2 social workers
- 13.8 social worker vacancies
- 26 family support workers
- 4 advice support and information officers
- 17 team managers and assistant team managers.

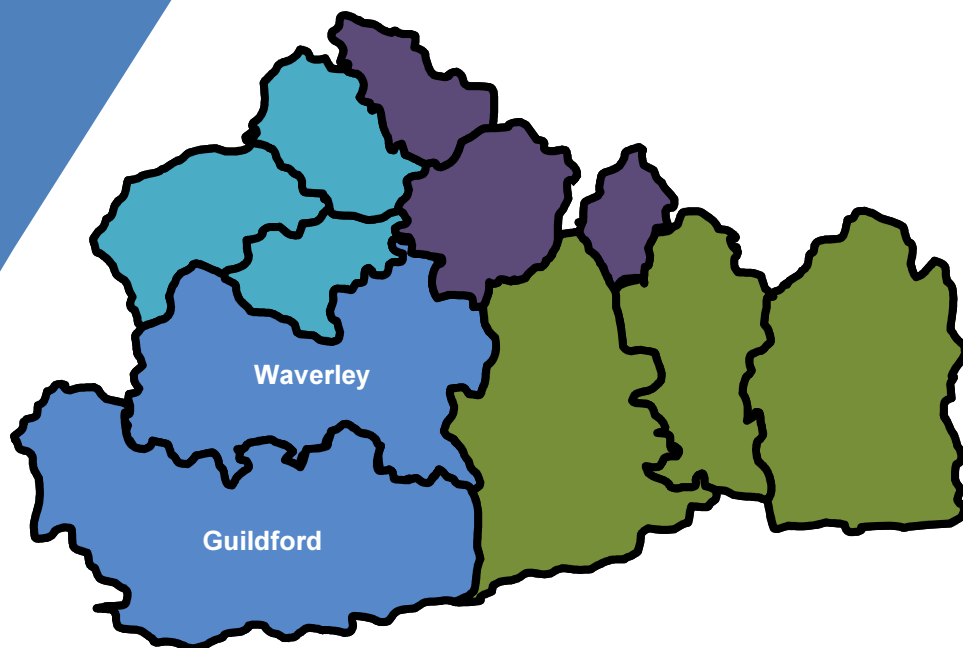
19 June 2015:

- 1062 open cases
- 224 children subject to a child protection plan
- 190 looked after children.

- **Total population:** 311,994
- **Children aged 18 and under:** 78,857



South-west area



Area structure

- 52 social workers
- 28 family support workers
- 17 team managers and assistant team managers

19 June 2015:

- 888 open cases
- 154 children subject to a child protection plan
- 173 looked after children.

- **Total population:** 263,499
- **Children aged 18 and under:** 59,650

- Guildford and Waverley boroughs.
- Our office, St Francis Centre, is just 15 minutes south of the M25 (junction 10), just west of Guildford town centre and near the borders of Hampshire, West Sussex and Berkshire. St Francis is on the Park Barn estate and is part of an old school building.

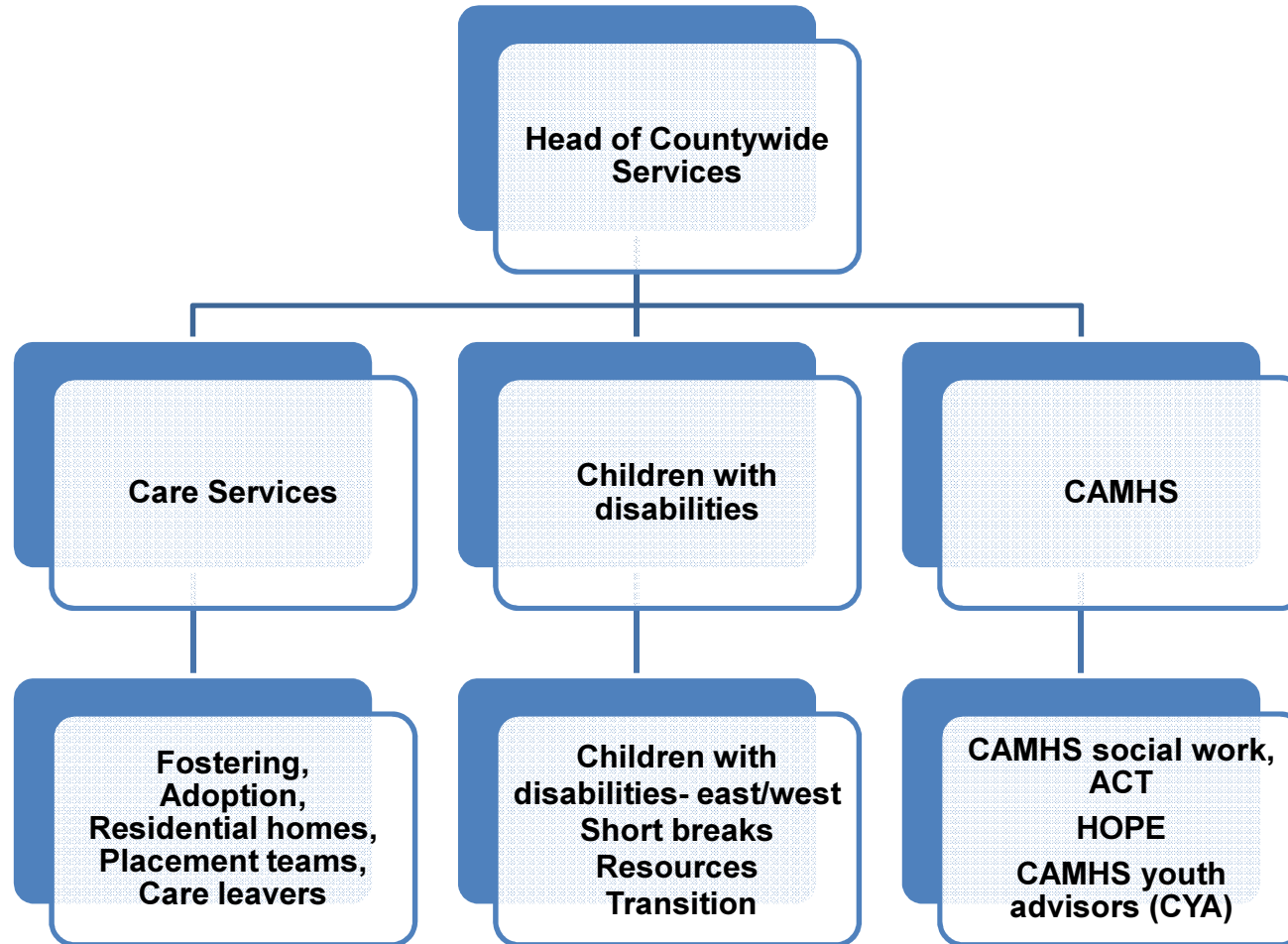


Countywide Services



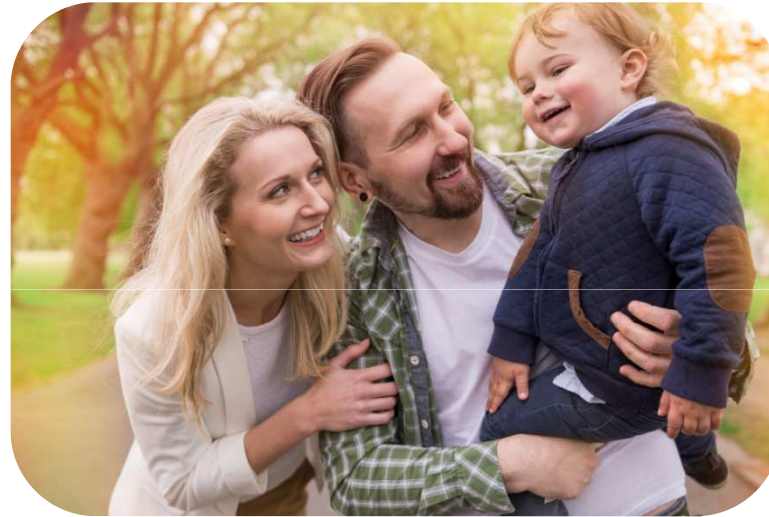
SURREY

Countywide Services Structure



Care Services

- **Fostering Service**
 - 356 carers caring for 384 children
- **Adoption Service**
 - 50 adoption orders in 2015
- **7 children's homes**
 - 2 rated outstanding, 5 good
- **External placements**
 - 50 residential children's homes
 - 201 IFAs
 - 11 parent and child fostering placements
 - 6 family assessment centres.
- **Care Leavers' Service**
 - 462 young people.



Children with disabilities

- Two teams (east and west) with 800 children.
- 2 short-break residential homes with provision for three long-term looked after children.
- Support services including domiciliary care and occupational therapists.
- Range of short-breaks commissioned through independent and voluntary sector.
- Overall budget £11.5 million.



SURREY

Child Adolescent Mental Health Service (CAMHS) and therapeutic services

- Team of 12 social workers working alongside specialist CAMHS teams.
- **HOPE:** integrated tri-partite service for children with complex mental health needs including two short-stay schools both rated good by Ofsted.
- **ACT:** assessment and therapy service for children with harmful sexual behaviour.
- **CYA:** CAMHS youth advisors / apprentices.



Surrey Child and Adolescent
Mental Health Services



SURREY

Multi-Agency Safeguarding Hub (MASH)

- July 2013 - joint Central Referral Unit (CRU) co-located Children's Services social workers and managers in existing police CRU, Guildford Police Station.
- Surrey and Borders Partnership NHS Foundation Trust (adult mental health) already part of the CRU.
- June 2014, Adult Social Care joined the MASH.
- Surrey Children's Services staff consists of 1 team manager, 2 assistant team managers, 5 social workers and 3 business support staff.
- Current MASH purpose: to manage and make decisions regarding police notifications (39/24s) sent to Children's Services from Surrey Police.
- Project plan in place to develop the MASH into one countywide front door for safeguarding concerns about children and vulnerable adults.



Extended Hours Service

- The Extended Hours Service is a multi agency therapeutic service for young people aged 10 to 15 and their families.
- Offers time limited intervention to try and prevent young people from becoming looked after children and to improve family relationships.
- Social workers, a family therapist, a primary mental health worker, resource workers and family support workers make up the Extended Hours Service.
- One team manager and two assistant team managers.
- Works intensively with families, both practically and therapeutically, for up to six months.
- Staff work shifts and weekends to meet the needs of children and families.
- Current caseload is 43.



Safeguarding



Safeguarding unit

- **Child Protection Conference Service:** providing independent chairs for all children subject to a child protection plan (19 June: 936).
- **Independent Reviewing Service:** providing independent officers for the reviews of children looked after by the local authority (19 June: 822).
- **Quality assurance team:** carry out audits of practice within area teams; providing challenge and recommendations for improvement.
- **Local authority designated officer:** manages allegations against staff working with children; providing advice and liaison with investigating agencies.
- **Surrey Safeguarding Children Board support team:** carries out work in support of the board's statutory functions.



- **Social work reform:**

- develops the learning and development offer for social workers commissioning training
- sponsoring staff seeking qualifications as a social worker
- developing retention strategies
- supporting the development of the social work academy.

- **Child Employment Service:**

- licensing employers in Surrey to take on children, ensuring compliance with legal requirements
- licensing use of children in theatre and film productions
- advising districts and boroughs in the granting of licensed premises.

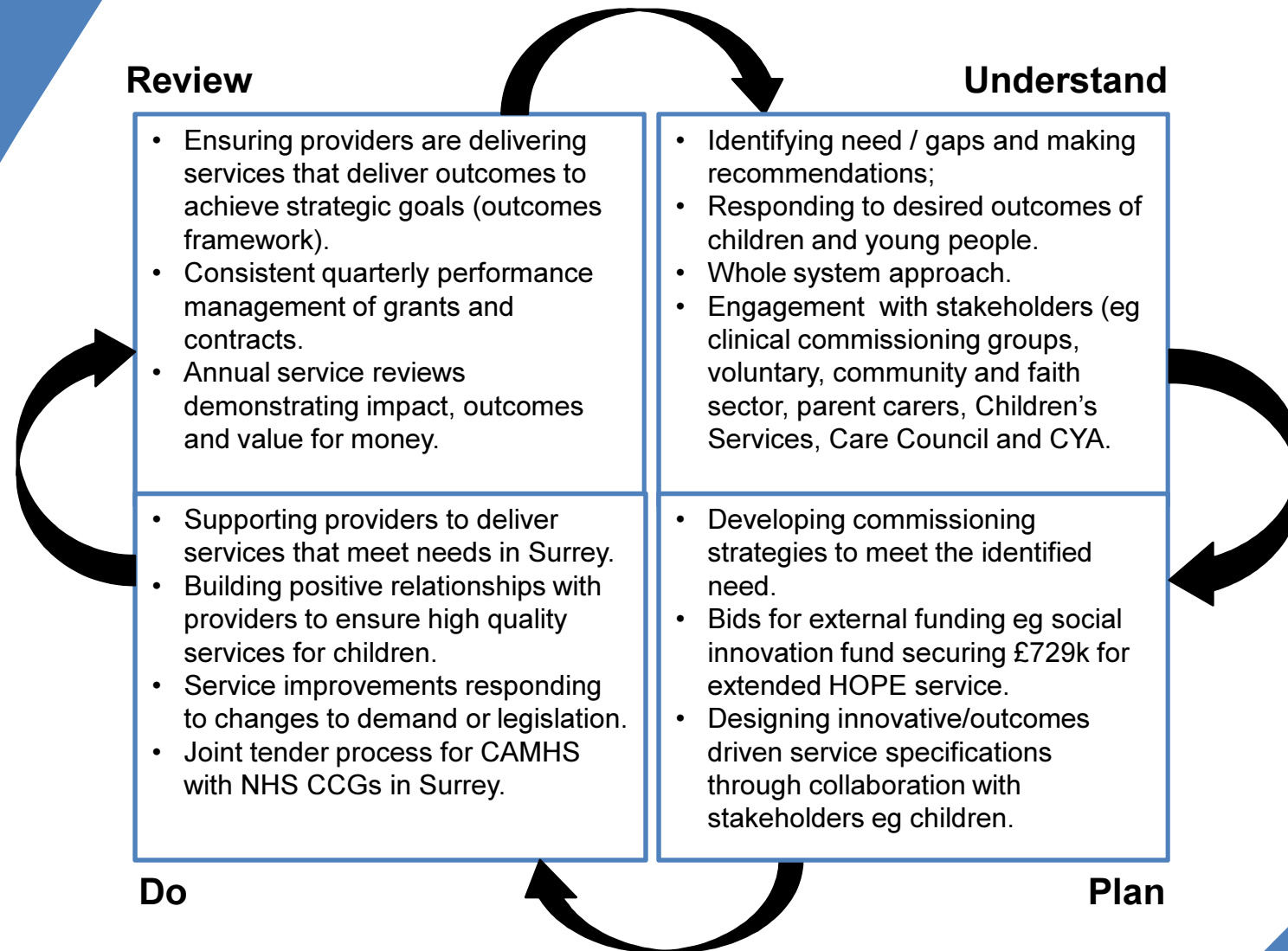


Commissioning



Commissioning team

Commissioning cycle



Performance and support

Children's social care performance team

- Countywide support to managers and teams providing performance information and regular reports.
- Development of performance reporting to underpin practice.
- Partnership with health and the wider CSF directorate.
- Production of monthly performance reports.
- Management of statutory returns.



Business administration

- Countywide administrative support to all teams - approximately 200 staff managed through supervisors and team leaders.
- Management of safeguarding unit administration.
- Management and coordination of supervised contact for those children who are in care – includes management of resources and 150 contact supervisors.
- Management of key IT projects which support service delivery.
- All finance transactional payments for the service.
- Information governance.

Information support team

- Countywide operational support and development of Children's social care recording system.



Caroline Budden
Assistant Director of Children's
Services and Safeguarding
01372 833400

Norman Fullarton
NE Area Head for
Children's Services
01372 832533

Ella Kulikowski
NW Area Head for
Children's Services
01483 519036

Ian Vinall
SE Area Head for
Children's Services
01737 737967

Penny Mackinnon
SW Area Head for
Children's Services
01932 794122

Sheila Jones
Head of Countywide
Services
01483 518691

Liz Ball
Head of Performance and
Support
01372 832536

Ian Banner
Head of Children's
Services Commissioning
07917 590657

Julian Gordon-Walker
Head of Safeguarding
01483 519275



SURREY